

# Integrating Business Intelligence with your ERP:

*Improve company performance with powerful  
reporting, analytics and dashboards*

**Jeff Gunderson, xTuple Midwest USA**

**Thursday, October 10, 2013**

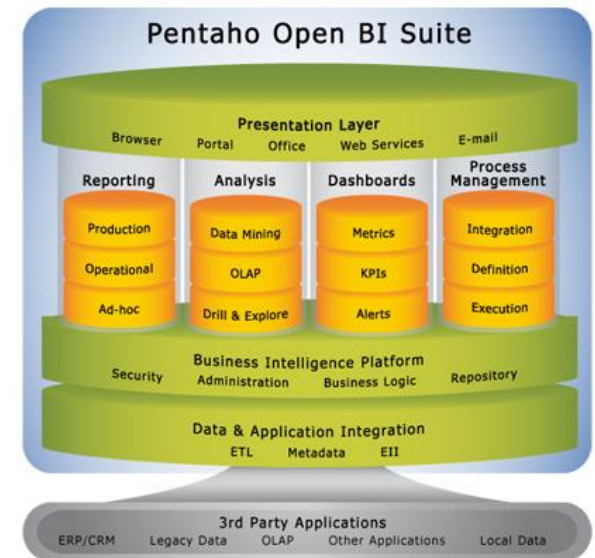


**WORLD'S #1 OPEN SOURCE ERP**

[www.xTuple.com](http://www.xTuple.com)

# Pentaho

- ▶ Best open source BI technologies:
  - ▶ Reporting
  - ▶ Analysis
  - ▶ Data Integration
  - ▶ Data Mining
- ▶ Enterprise solutions with community version
- ▶ Strong open source community



# xTuple BI



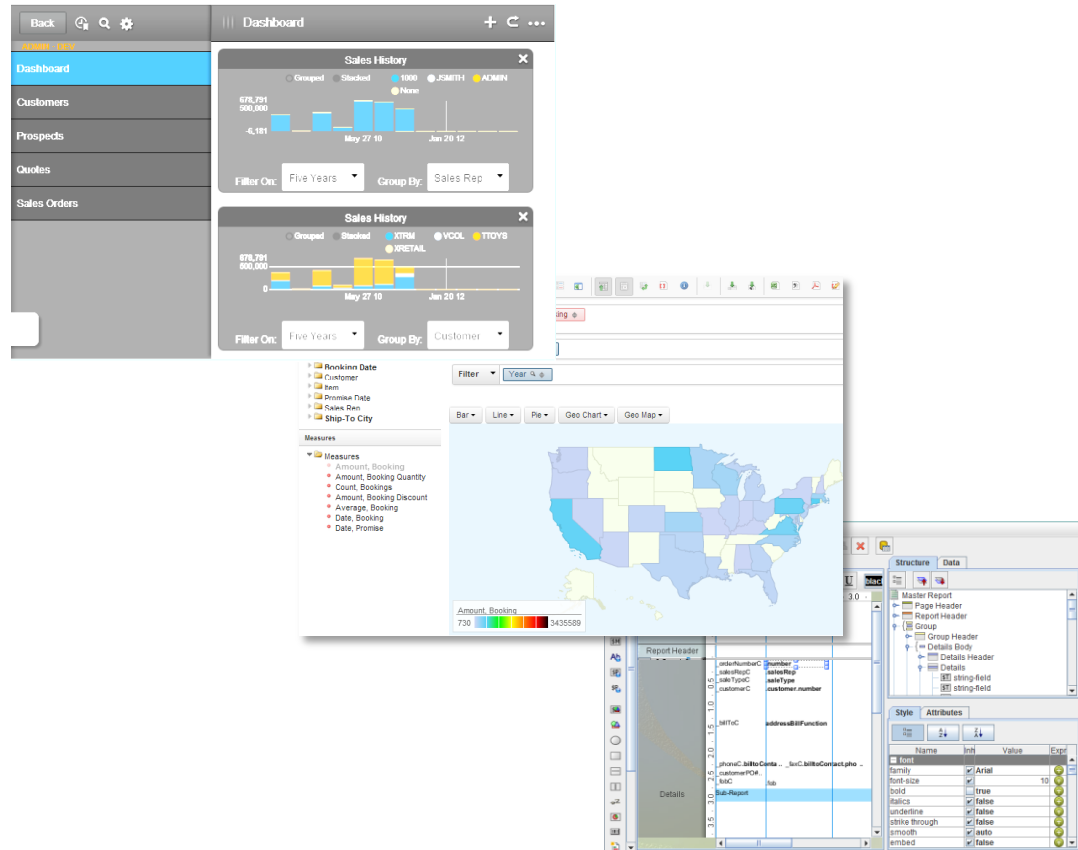
# Integrated Approach

- ▶ Integrated User Interface
- ▶ Installation procedures
- ▶ Update procedures for BI data
- ▶ Integrated authentication and authorization



# xTuple BI

- ▶ Dashboards
- ▶ Analytics
- ▶ Reports



# Analytics

- ▶ Data organized in Cubes
  - ▶ Fast ad-hoc analysis
  - ▶ Scalable to large databases
  - ▶ Supports historical analysis
  - ▶ Emphasis on Key Performance Indicators
  - ▶ Support analysis tools

# Cube Intro

- ▶ Cubes record a single “Fact” type
  - ▶ Sales order line item
  - ▶ Shipment line item
- ▶ Facts have measures
  - ▶ Sales amount, discount
  - ▶ Cost, margin
- ▶ Facts are organized by dimensions
  - ▶ Customer
  - ▶ Time

# Shipment Cube

	Chicago	New York	Phoenix
Rudder	20	0	4
Wing Flap	0	300	0
Engine mount	24	0	50
Prop	1	8	5
Wing support	0	222	0



# Reports

- ▶ Pentaho Report Designer
- ▶ Can utilize a variety of data sources
- ▶ Report access via browser.
- ▶ Filters on Web-based reports.



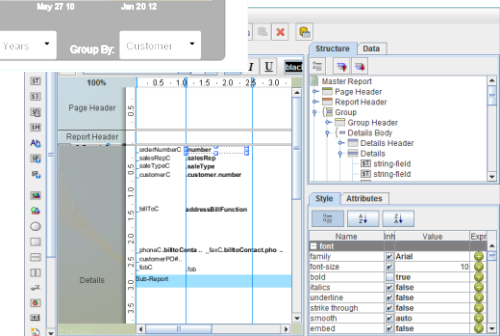
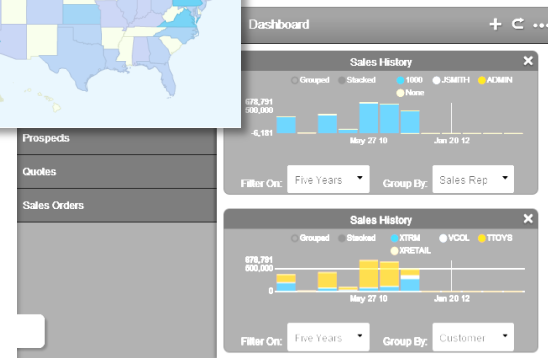
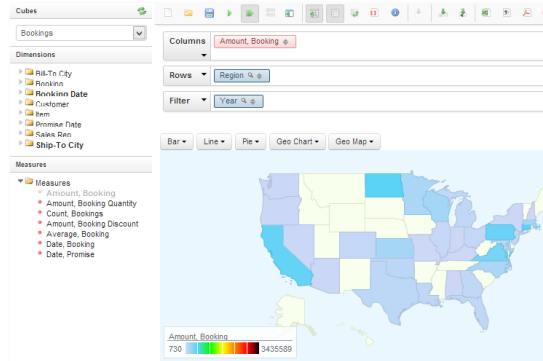
# Integrated Approach

- ▶ Integrated User Interface
- ▶ Installation procedures
- ▶ Update procedures for BI data
- ▶ Integrated authentication and authorization



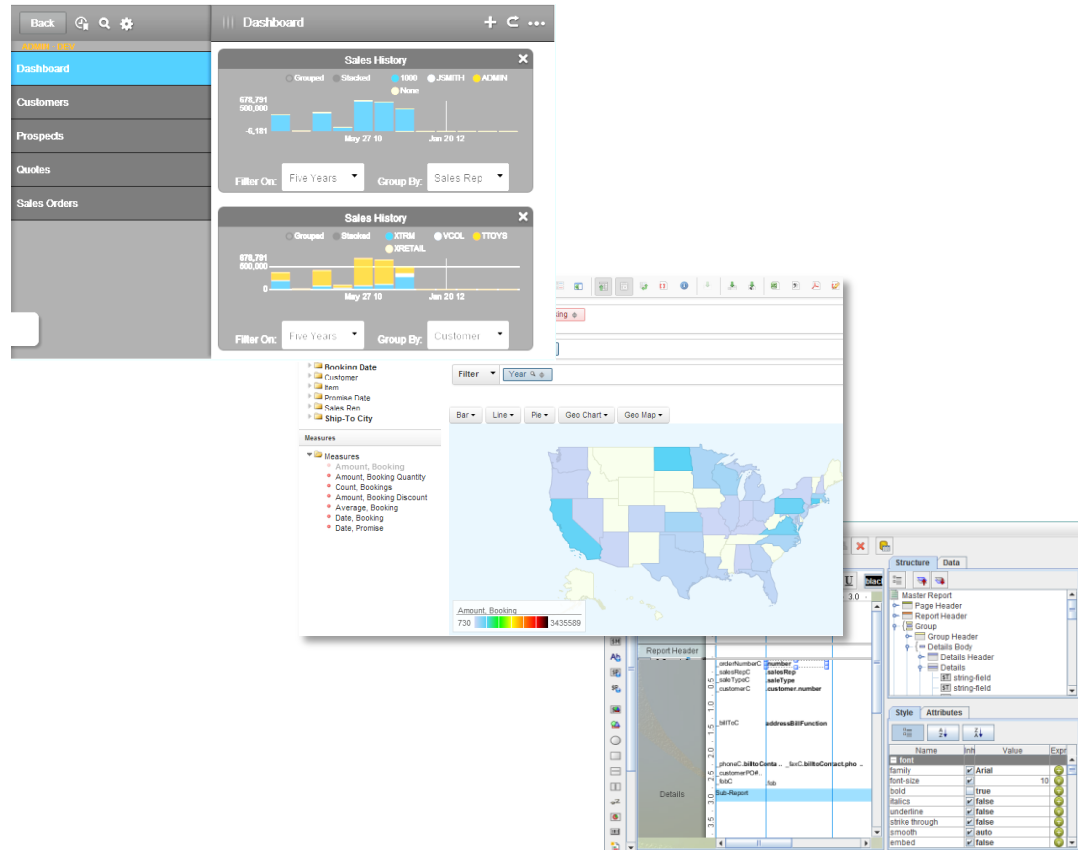
# xTuple BI

- ▶ Analytics
- ▶ Dashboards
- ▶ Reports



# xTuple BI

- ▶ Dashboards
- ▶ Analytics
- ▶ Reports



# Dashboards

- ▶ Compose and save by user.
- ▶ Operational data directly from the xTuple ERP database.



# Analytics

- ▶ Data organized in Cubes
  - ▶ Fast ad-hoc analysis
  - ▶ Scalable to large databases
  - ▶ Supports historical analysis
  - ▶ Emphasis on Key Performance Indicators
  - ▶ Support analysis tools

# Cube Intro

- ▶ Cubes record a single “Fact” type
  - ▶ Sales order line item
  - ▶ Shipment line item
- ▶ Facts have measures
  - ▶ Sales amount, discount
  - ▶ Cost, margin
- ▶ Facts are organized by dimensions
  - ▶ Customer
  - ▶ Time

# Shipment Cube

	Chicago	New York	Phoenix
Rudder	20	0	4
Wing Flap	0	300	0
Engine mount	24	0	50
Prop	1	8	5
Wing support	0	222	0



# Getting Started

**FREE TRIAL**

**NO CREDIT CARD REQUIRED**



- ▶ [www.xTuple.com/free-trial](http://www.xTuple.com/free-trial)
- ▶ [github.com/xtuple/bi](https://github.com/xtuple/bi)



# Contact

**Jeff Gunderson**

**xTuple Enterprise Solutions Architect**

**[Jeff@xTuple.com](mailto:Jeff@xTuple.com)**

