

Automating Complex Data Transfer Processes Between xTuple Databases

Mike Atherton, xTuple DC

Keith Rauseo, EMSEAL Joint Systems

Allan Snodgrass, Tekoa Software

Thursday, October 10, 2013



Dual-Instance Data Transfer

- ▶ EMSEAL: locations in Massachusetts & Ontario
- ▶ Each location has a separate xTuple database
- ▶ Each location is both a customer and a vendor of the other
- ▶ Each location exclusively manufactures a specific product set
- ▶ All products are drop-shipped from their manufacturing location



More Background

- ▶ Orders for either product set by Canadian customers are entered in the Canadian system
- ▶ Orders for all other customers are entered in the U.S. system



Item Transfer

- ▶ Items are created/updated in the U.S. system
- ▶ Export characteristic is set
- ▶ Automatic process pulls new/updated items
- ▶ Creates CSV file, exports to Canadian system, imports using PostgreSQL on CSV Atlas
- ▶ Creates item, item site, item sources & prices, conversions, tax type, characteristics, configured Bill-of-Materials, Bill-of-Accessories



Order Transfer

- ▶ Sales order for a product manufactured by the other location generates a drop-ship purchase order to that location
- ▶ Automatic process pulls PO after it is released
- ▶ CSV file is exported to the other system and generates a sales order and work orders



Shipment Transfer

- ▶ Automatic process pulls shipments made against intercompany sales orders
- ▶ CSV file is exported to the other system and generates a receipt against the purchase order and a shipment against the original customer's sales order

Transaction Process

- ▶ Enter sales order – human
- ▶ Create drop-ship purchase order – xTuple
- ▶ Export PO & create intercompany sales order – Transfer Process
- ▶ Create work order – Transfer Process
- ▶ Issue to shipping & ship order – human
- ▶ Post production & close work order – xTuple
 - ▶ Most manufactured items are Job items



Transaction Process

- ▶ Export shipment & create PO receipt – Transfer Process
- ▶ Create intercompany invoice – human
- ▶ Issue to shipping & ship original sales order – Transfer Process
- ▶ Create customer invoice – human
- ▶ Humans do order entry, shipment to customer, & invoicing – the rest is automated



xTupleConnect

- ▶ All transfer processes are scheduled to run every minute of every workday
- ▶ We modified xTupleConnect's scheduling function so jobs recurring each minute only run 8 am-6 pm M-F and jobs recurring daily only run M-F
- ▶ This modification prevents a ton of unnecessary processing and “results” e-mails



Enterprise Integration

It's All About Relationships



www.TekoaSoftware.com



WORLD'S #1 OPEN SOURCE ERP

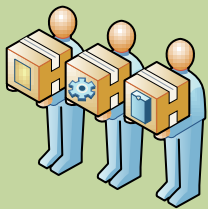
www.xTuple.com



KiteCo, Inc.



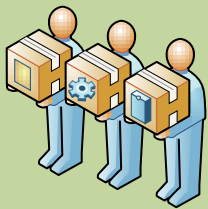
KiteCo, Inc.



Customers



KiteCo, Inc.



Customers

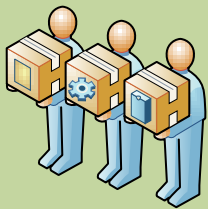


Suppliers





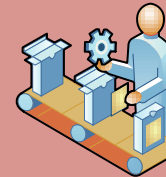
KiteCo, Inc.



Customers



Suppliers



Partners

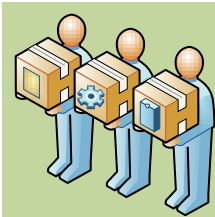
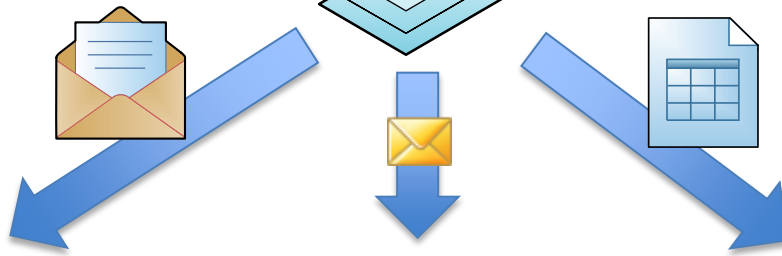
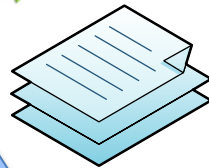


WORLD'S #1 OPEN SOURCE ERP

www.xTuple.com



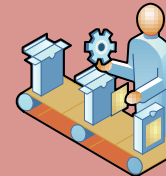
KiteCo, Inc.



Customers



Suppliers



Partners

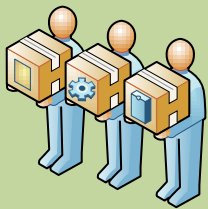


WORLD'S #1 OPEN SOURCE ERP

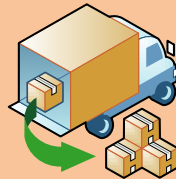
www.xTuple.com



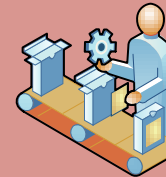
KiteCo, Inc.



Customers



Suppliers



Partners



WORLD'S #1 OPEN SOURCE ERP

www.xTuple.com



KiteCo, Inc.

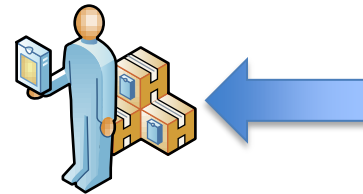
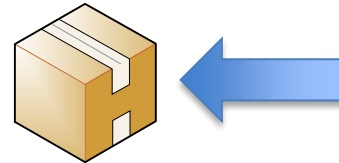


WORLD'S #1 OPEN SOURCE ERP

www.xTuple.com



KiteCo, Inc.

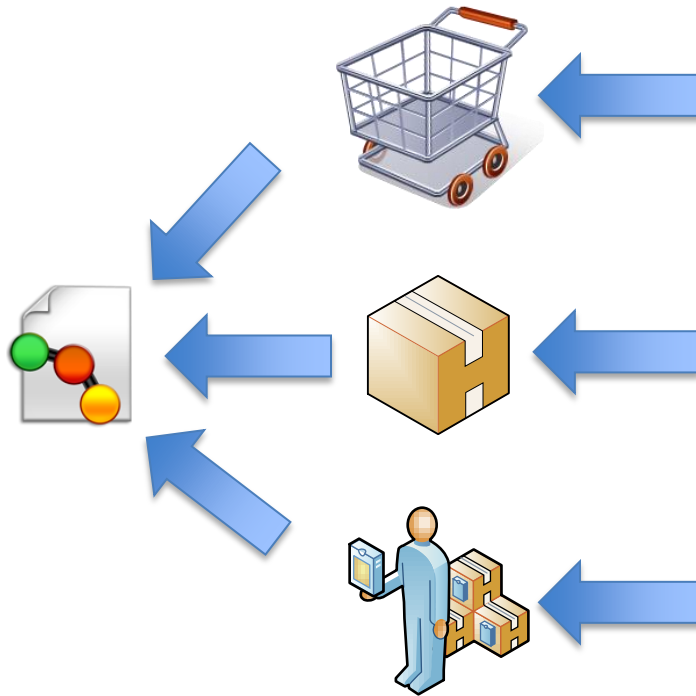


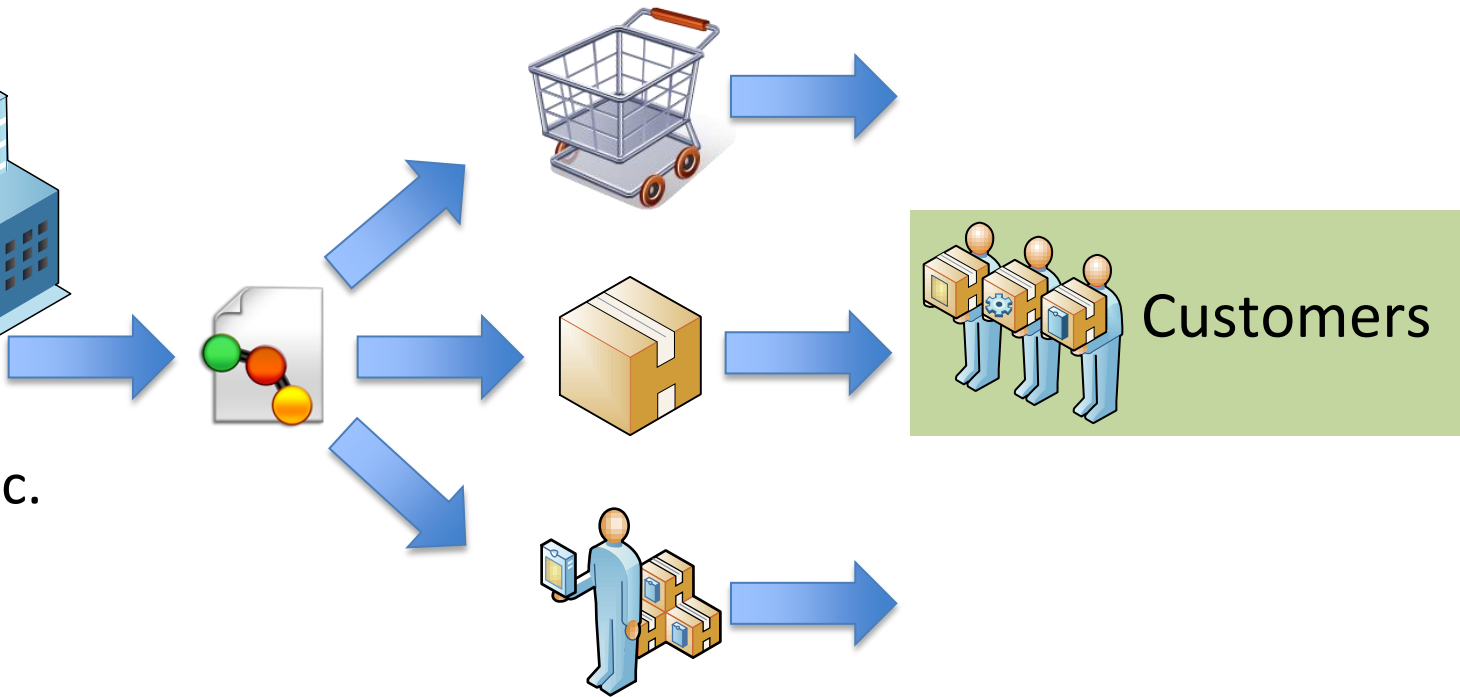
Customers



WORLD'S #1 OPEN SOURCE ERP

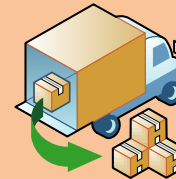
www.xTuple.com



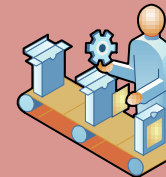




KiteCo, Inc.



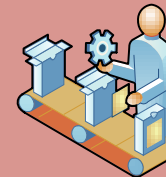
Suppliers



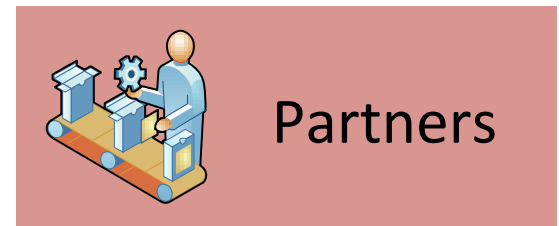
Partners



Suppliers



Partners





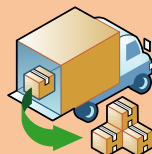
KiteCo, Inc.



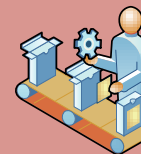
TekCentre



Customers



Suppliers




Partners





KiteCo, Inc.




 TekCentre

 Order


 Notice


 Invoice


 Order

 Receipt

 Transfer

 Order

 Report

 Inquiry

 Customers

 Suppliers

 Partners



App

- Customizable Endpoints
- Customizable Schedule
- Transaction History Log
- Transaction Analytics
- Data Transformations
- Proactive Notification



Inbound



Respond



Report



Outbound



Trigger



Alert



Tekoa Software, Inc.
xTuple Solution Provider

www.TekoaSoftware.com

Phone: 888-811-2998

Email: service@tekoasoftware.com

Presenter: Allan Snodgrass



Mike Atherton

xTuple Evangelist & Director of Training

Mike@xTuple.com

Keith Rauseo

EMSEAL IT Manager

krauseo@emseal.com

